

**FSM  
Brand**

# Fowler Seed Marketing

*Serving Your Seed Needs Since 1995!*

## FSM Brand Organic Cow Candy BMR

FSM Brand Organic Cow Candy BMR is a semi-compact, extremely sweet, type 12, brown midrib sorghum-sudan hybrid that produces excellent yields of highly digestible, high energy summer forage.

### Agronomic & Performance Characteristics

Maturity: 92 days from sowing (heading); cut or graze forage at 45-60 days

Height: 5'-7' tall, excellent standability

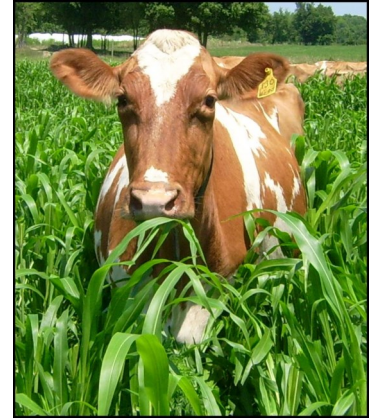
Regrowth: Extremely rapid, profuse tillering, non-photo sensitive

Forage Yield: 18-25 tons @ 65% moisture (1 ton dry matter per foot)

BMR family: Type 12

Development: Non-GMO variety

Seeding Rate: 35-50#/acre



FSM Brand Organic Cow Candy BMR offers superior forage digestibility, drought and disease tolerance, excellent standability and very high leaf retention at harvest! **Cow Candy** is widely adaptable to most soils and once established should produce acceptable yields requiring one-third the amount of water needed by corn. **Cow Candy** has performed well hot, dry as well as cool, wet summers in Ohio. Seed

alone or with Barkant turnips, T-Raptor or red clover, to increase forage protein levels. **Cow Candy** should be drilled or broadcast into a firm seed bed once the soil temperature remains at or above 65 degrees, generally May 25 through Au-

gust 1st. **Cow Candy** can be mechanically harvested in either one large cutting, preferably just before head emergence; or in multiple cuttings, beginning at 40-50 days and continuing at 30-45 day intervals. It can generally be safely grazed once plants have reached 24 inches in height; however, caution should be used during periods of stress to avoid nitrate poisoning, especially after large applications of nitrogen fertilizer. Harvest **Cow Candy** completely before frost to minimize the potential for prussic acid formation. If frosted, allow to completely ensile (6-9 weeks) before feeding. Do not feed to horses.

### Forage Analysis

	DM Yield:	NE lactation:	%ADF:	%NDF:	%Crude Protein:
1st harvest (40-45 days):	2.7	.79	32.5	50.5	20.60
2nd harvest (+35 days):	2.2	.77	33.0	51.0	18.00
3rd harvest (+35 days):	2.7	.75	34.0	53.0	15.60

FSM Brand Cow Candy II BMR will benefit from **Myco-Seed Treat** inoculation before planting at a rate of 4oz per 50# of seed.

Use our **BioEnhanced Summer Annual Fertility Program** to supply balanced nutrition throughout the growing season, including, essential calcium, phosphorus, and potassium.

*FSM Brand Organic Cow Candy BMR Sorghum-sudan is certified organic by NICS.*

Fowler Seed Marketing  
Rock Creek, Ohio

1995-2015  
Celebrating 20 Years!

(888)249-SEED  
www.fowlerseed.com

Certified Organic

Certified Organic

Certified Organic