

BARPENTA

TIMOTHY

BARENBRUG

TIMOTHY



Barpenta is a late maturing timothy with very high yield. Barpenta is popular because of its high performance and strong range of characteristics. Barpenta has performed well in trials and its high yield make it especially suited for hay production. Barpenta is a late maturing variety, but with exceptional spring development. In addition to high yield, it offers excellent disease resistance and persistence, making it a favorite with growers. Timothy works well in blends with winter-hardy perennial ryegrass and white clover. This will add palatability, spring growth, health and winter-hardiness to the stand. Pure stands of timothy are perfect for haying but less suitable for grazing. When timothy starts heading out, both palatability and digestibility fall dramatically. Therefore a late maturing variety is preferred as a blend component for grazing. Timothy has long been recognized as the grass of preference for horses. It causes few, if any, nutritional problems and gives hay that characteristic "nose" which only comes from a good Timothy content.

- ▶ Very high yield
- ▶ Excellent palatability
- ▶ Good spring growth
- ▶ Late maturing
- ▶ Winter-hardy
- ▶ Persistent

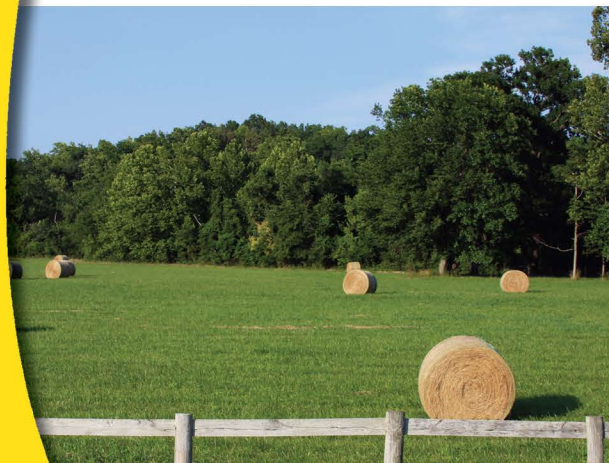


ADAPTATION - CLIMATE

Barpenta is a cool season grass and adapted to cooler and moister areas. Barpenta is best adapted to areas that receive greater than 15 inches of annual rainfall.

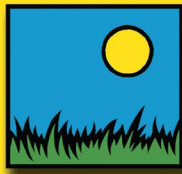
ADAPTATION - SOIL

Barpenta grows in a variety of soil types, from clay to sandy and tolerates soaked soil after spring flooding. It prefers well-drained, moist, fertile soil with a pH of 6.0-7.0.



 BARENBRUG

Great in Grass® for more than 100 years
800.547.4101 • www.barusa.com



BARPENTA

TIMOTHY

USES

Barpenta is flexible. It is suitable for well-managed grazing, as well as cutting for hay or grass-silage. With its late maturing and high yields, Barpenta is excellent for hay production. Barpenta performs well with in blends, for example with perennial ryegrass and white clover. As a pure stand, Timothy is ideal for haying, making it excellent for horse hay production.

ESTABLISHMENT

High palatability and superior winter hardiness are timothy's most important features. It does very well on wet, peaty and heavy textured soils. The establishment of this species is rather slow and summer production is often limited. Timothy tolerates a cutting management well but only a few varieties like Barpenta perform well under grazing.

SEEDING RATE

Seeding rate: 10-15 lbs / acre

MANAGEMENT

In order to maximize the benefits of a high quality timothy, it should be managed well. Seed in a fine, well-prepared seedbed. Brillion seeders or broadcasting the seed followed by a cultipacker works best. If a regular drill is used, we suggest crossing the field twice, at an angle.



 **BARENBRUG**

BARENBRUG

DISTRIBUTOR

Fowler Seed Marketing
(888) 249-SEED
Rock Creek, Ohio
FowlerSeed.com

Great in Grass®

800.547.4101 • www.barusa.com