

Fowler Seed Marketing

Serving Your Seed Needs Since 1995!

Dairy - Rotational Forage Options for Storage and Grazing

High yielding, digestible annual forages have a place on every dairy. For early spring planting straight or as an alfalfa nurse crop, we recommend **Baler** forage oats, **Optimum II**, or **Green Spirit** Italian Ryegrass for early summer harvest. Once soil temperatures reach at least sixty-five degrees in late May, plant **FSM Brand Cow Candy II BMR** sorghum-sudan alone or with Barenbrug **T-Raptor** rape or **Barkant** turnips. By establishing before soil moisture becomes lacking, **Cow Candy II BMR** will develop enough root to produce excellent tonnage on about 25% of the moisture needed to grow corn. Adding turnips, increases the protein content of the forage when grazed or baled. **Green Spirit** can be planted after sorghum-sudan, small grains or early corn silage for top quality fall and spring forage. **Aroostook rye** and triticale establish well after soybeans or corn silage and produce lots of tonnage for spring harvest. Discuss your rotational forage needs with your local FSM dealer.

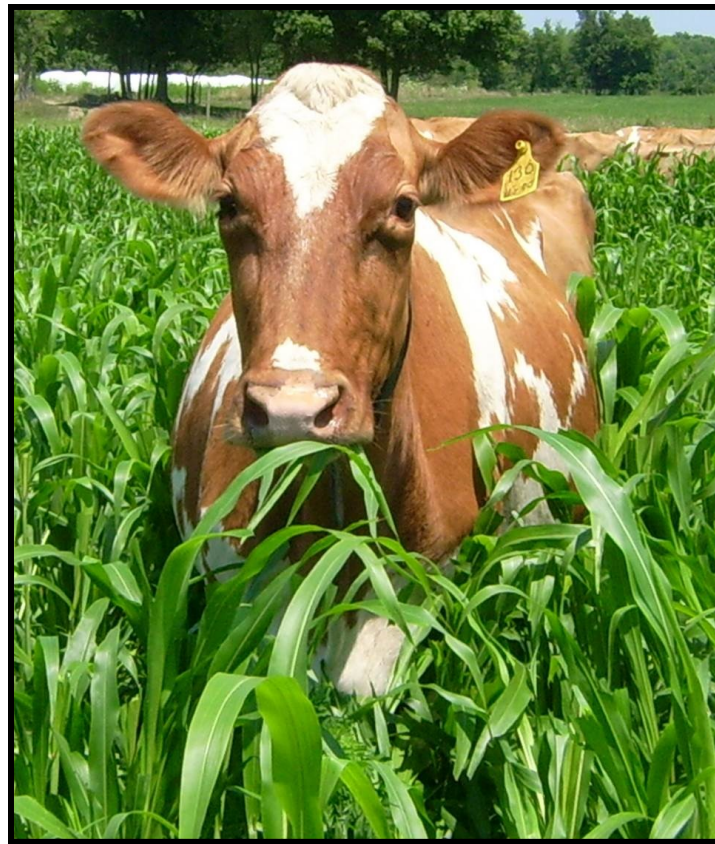


Photo courtesy of FSM dealer Eric Grim, Grim Dairy Farm, New London, Ohio